

#### IV. HISTORY OF THE WESTPORT SCHOOL SYSTEM

Much of the information in this section was obtained from the Standard-Times article "Teacher Revives Old Westport School Days". Other sources of information are School Committee reports, the Westport Free Public Library and the Westport High School library.

Most of the photos were taken during the course of this project and some old photos were loaned by area residents.

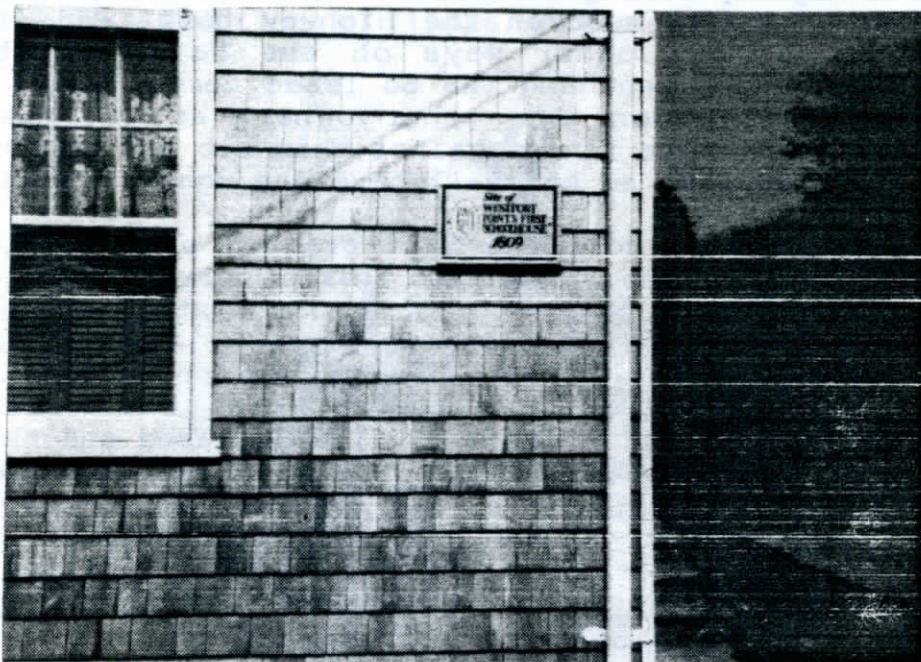
## HISTORY OF THE SCHOOLS IN WESTPORT, MASSACHUSETTS

Schools were the first cultural institutions in Westport. They have changed dramatically since Westport became a Town in 1787. Much of the change from small district schools to larger town-wide schools is due to the invention of the automobile. Transportation was a problem so students went to a school within walking distance and some schools had very few students in the district. When the first "school bus" was made available new, larger schools were built in central locations and the smaller schools were closed. Some of the closed schools were bought by local residents and became homes and others were eventually destroyed.

- 1733 - State legislature passed a law establishing public schools.
- 1787 - Westport incorporated as a Town in its own right.
- 1788 - Town meeting authorized establishment of public schools.
- 1789 - Town schoolmaster hired.
- 1800 - Town divided into districts; each district was given a number; several were formed; only men were hired to teach.
- 1801 - First appropriation of funds for school was set aside -- \$120.
- 1805 - School appropriations divided among districts for the purpose of maintaining the schools.
- 1807 - Women teachers began to be hired.
- 1809 - The first kindergarten was conducted about this time. It was known as the "old maid's school" because children were taught in homes; more of a sitting service.

1809 - WESTPORT POINT SCHOOL

Land for the Westport Point School, District No. 4, was donated. "This lot was just north of the hotel. After the war of 1812 the United States government returned the surplus money when all debts had been paid to the different states. The state of Massachusetts turned hers into a school fund and public schools were started."



Site of the Westport Point School is noted on a plaque on a home at 1972 Main Road.

1809 - THE LAND FOR THE WESTPORT POINT DISTRICT SCHOOL WAS SECURED--SCHOOL HOUSE IN DISTRICT NO. 4.

"Deed from Christopher Gifford to the Proprietors of School House in District No. 4.

Know all Men by these Presents that I Christopher Gifford of Westport in the County of Bristol and Commonwealth of Massachusetts yeoman in consideration of Twenty Dollars paid by Isaac Cory, Israel Wood, Perry Gifford, Warren Gifford, Christopher Cornell, Abner Gifford, Micah Dean, Ebenezer V. Sowle, Asa Bly, Humphrey Hammond, Joseph Tripp, Pardon Allen, Jethro Howland, Benjamin Hicks and Elick Carr, all of them of the Town, County and Commonwealth aforesaid; the Receipt whereof I do Hereby acknowledg, Do hereby give, grant, sell and convey unto the Said Isaac Cory, Israel Wood, Perry Gifford, Warren Gifford, Christopher Cornell, Abner Gifford, Micah Dean, Ebenezer V. Sowle, Asa Bly, Humphrey Hammond, Joseph Tripp, Pardon Allen, Jethro Howland, Benjamin Hicks and Elick Carr, to them,

their heirs and assigns for Ever a certain Lot of Land situate in Westport aforesd.; Discribed and Bounded as followeth: Begining at Stone Sett in the Ground on the East Side of the Highway, thence Easterly thirty-four feet to a Stone Set in the Ground; from thence northerly thirty-three feet to another Stone Set in the Ground, thence westerly thirty-four feet to another Stone by the Said Highway, thence Southerly in the Line Said Highway thirty-three feet to where it first begun this Lot bound west on the Highway that Leads to the Point and all other ways on the Said Christopher Gifford's own land and the Sd Isaac Cory, Israel Wood, Perry Gifford and the other owners are to make and maintain all the fence against this Lot and Christopher Gifford as Long as he shall have one against this Lot.

To have and to hold the Said granted premises thereto belonging to them the said Isaac Cory, Israel Wood, Perry Gifford, Warren Gifford, Christopher Cornell, Abner Gifford, Micah Dean, Ebenezer V. Sowle, Asa Bly, Humphrey Hammand, Joseph Tripp, Pardon Allen, Jethro Howland, Benjamin Hicks and Elick Carr and I Do Covenant with said Isaac Cory, Israel Wood and the Rest that I am Lawfully seized in Fee of the Premises and have good right to Sell the Same in manner aforesaid and that I will warrant and Defend the Same to them, Isaac Cory, Israel Wood and the Rest to them and their Heirs and assigns for ever against the Lawfull Claims of all Persons.

In Witness whereof I have hereunto Sett my hand and Seal this 19th Day of June in the year of Lord 1809.

Signed, Sealed and Delivered  
Christopher Gifford

In Presents of

Abner Sowle  
Seleg Sowle

Bristol ss Westport, December 19, 1809. The above named Christopher Gifford acknowledged the above Instrument to be his free act and Deed

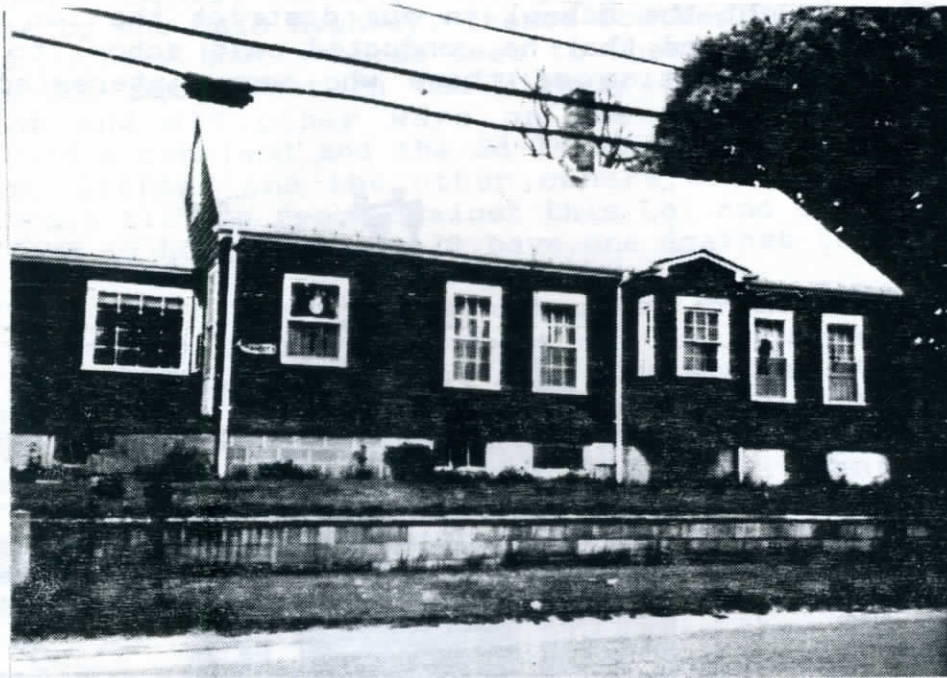
Before me

Abner Brownell, Justice of the Peace."

"Shortly after the erection of the first schoolhouse, another was built in the lot just south of Hammond's store. The building consisted of one story for some time, then a second floor was added. At one time in the busy days, there were sixty scholars in the lower schoolhouse and fifty in the upper. This entry for 1824 is interesting: 'This may certify that George C. Bailey taught the school in our district the two last winters past and that he conducted said school to the entire satisfaction of those who were interested in it.'"



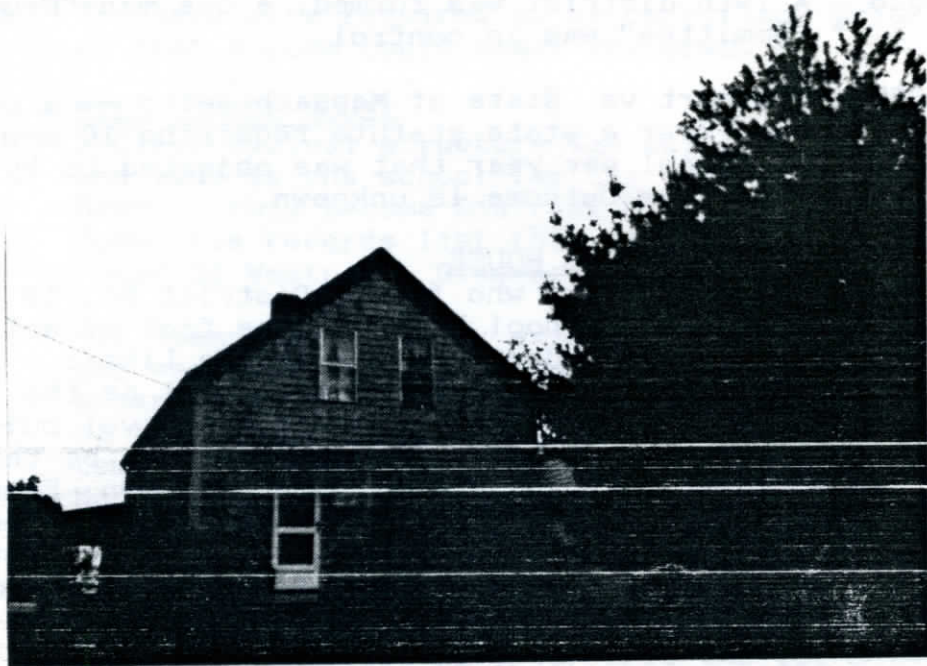
1809 - 1810 - About this time, Adam Gifford built a cape on a lot beside the Pacific Union Church and incorporated an old school from the Forge Road area. The ell was a schoolhouse that was moved and an addition built at its present location of 43 Drift Road.



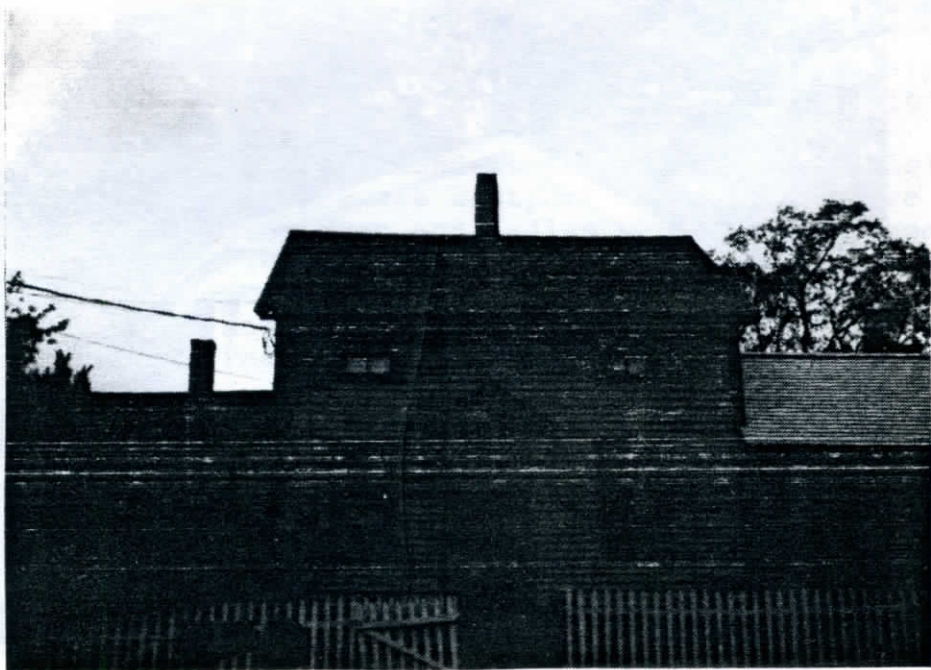
1815 - Around this time, a double cape was built at 538-540 Old County Road. An early schoolhouse sat on this site.



The barn on this property at 583 Old County Road contains part of the original east side school.



1816 - About this time, a schoolhouse sat on Popple Ridge in the Head. A home stands on this site at 29 Drift Road.



- 1816 - 18 school districts were formed to keep pace with the increased population.
- 1828 - A 19th district was formed; a one man "Prudential Committee" was in control.
- 1829 - Westport vs. State of Massachusetts -- a court case over a state statute requiring 10 months of school per year that was objected to by the Town; the outcome is unknown.
- 1833 - LITTLE SCHOOL HOUSE  
The eastsiders who formed District No. 19 built the Little School House at the foot of Wolf Pit Hill on land donated by Nicholas Little. School Committee records list this school as the "Head of Westport, Primary"; a Greek Revival building that still stands. It is claimed to be the "oldest standing schoolhouse" in town. Educating children in this school lasted until the end of the 1800's. Children occupied benches around 3 sides of the room, the teacher's platform filling the fourth.

Fifty years prior, the Wolf Pit Hill School was on this site (so named because wolves had been captured there, according to town tradition).

From 1907 to 1911, the Little School House was a library.





1837 - The State Board of Education was established by the Governor.

1838 - Teachers were required to be certified; prior to that anyone could teach children.

1841 - BELL SCHOOL HOUSE

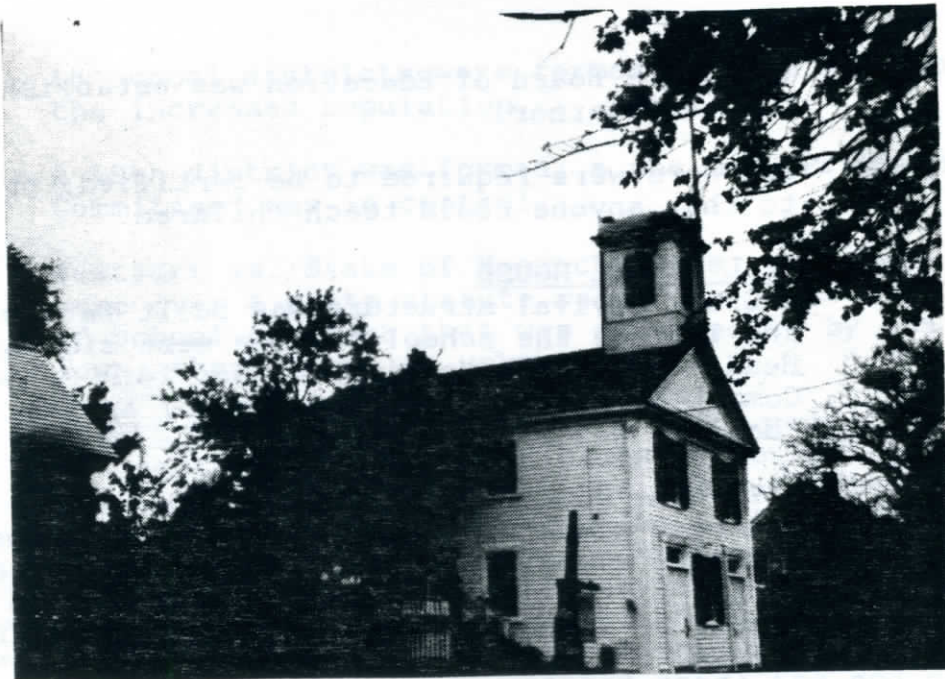
A Greek Revival structure was built between 1841 and 1847 as the school for the west side of the Head -- this became District No. 14. School Committee records list this school as the "Head of Westport, Grammar".

"It seems some rivalry existed between the east and west sides of the Head which had, anyway, separate school districts. After the appearance of the Little School, a small but precious Greek temple of learning, the west side, as District No. 14, set out to replace its school which sat on the lot south of the present Bell School. They had the old school moved south on Drift Road where it perhaps became District No. 10. In 1845, Abner P. Gifford agreed to let the district committee have for free the lot between the old school lot and the lot of the Widow Richmond, and in 1848, Gifford's widow and son quitclaimed this lot 'where the schoolhouse and outbuildings stand'. Along with a love of learning went a wish to show that the west side could have the most grand school in Westport, a building that followed the newest form of Greek Revival with a cupola. The remark of a townsman reflects the jealousy between school districts: 'Them folks to the Head is sittin' mighty high toned, building a school with bellcony on it!'

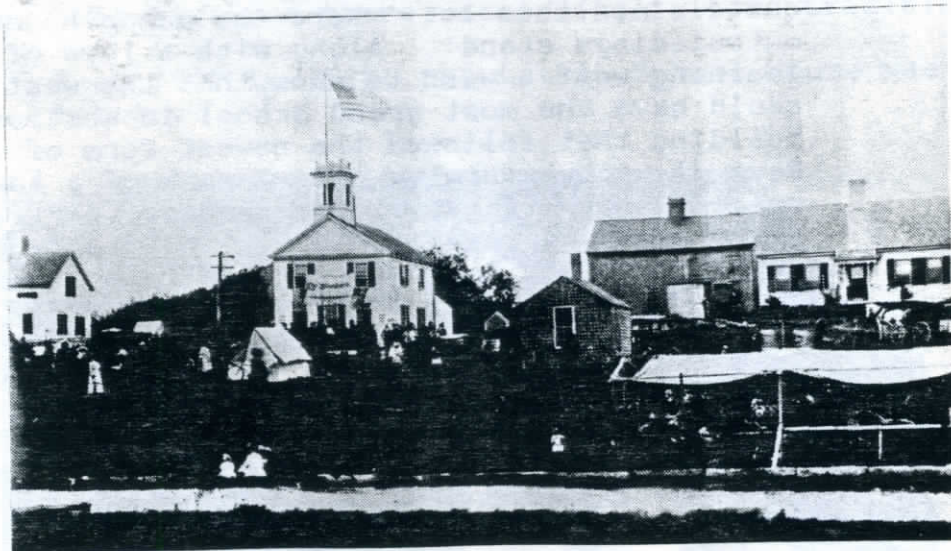
"In 1858, the second floor of the Bell School became the private Westport Academy, a place for 'young gentlemen and ladies who wish to prepare themselves for teachers...' and for young men wishing to prepare for college. The Academy always had male instructors who believed that discipline was a part of education.

"Officially known as Sandy Hill Academy, District No. 14, it was commonly called the Bell School as it was the only school house in town possessing a tower bell. After 1900, it was no longer used for school purposes."

"After 1905, it became the property of the Westport Public Library Association, a private group with origins in the 1840's."

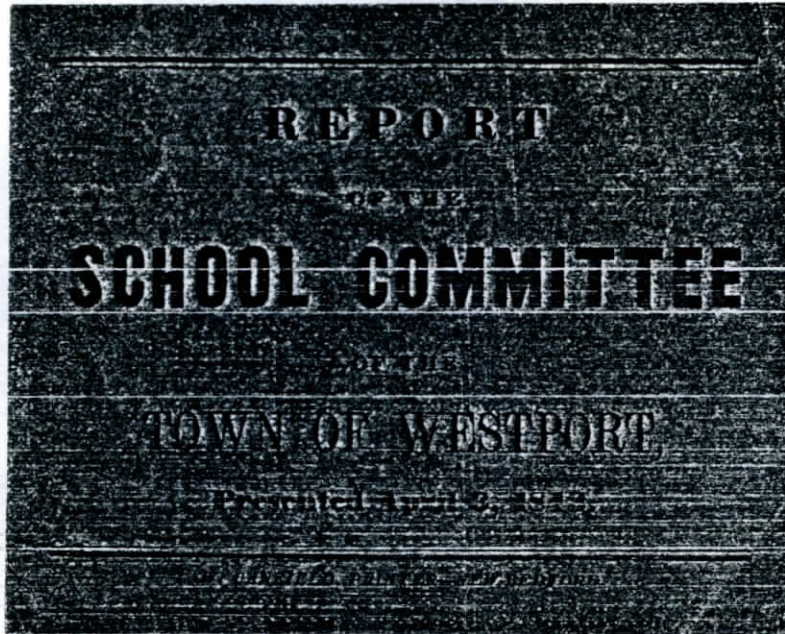


In 1908, the Bell School was the site of the celebrations for "Old Home Week".



In 1975 restoration work began to lift the building off its foundation in order to dig a cellar. The old granite foundation stones were numbered to assure accurate replacement of those original stones when the building was set back in place. The target date for completion of renovations was set at July 4, 1976, the Bicentennial of the United States.

- 1841 - A general School Committee was formed.
- 1841 - 1842 - The first school library was started at the Westport Point School with 85 books being donated.
- 1843 - The first printed School Committee Report was issued. 700 copies were printed.



- 1843 - A Prudential Committee to oversee district schools grew to 20 members.
- 1847 - District schools were allowed to name their own Committeemen.  
School records became compulsory.
- 1850 - Special Town taxes were levied for schools.
- 1856 - Three School Committee members were appointed to oversee the school system.
- 1857 - Uniformity of textbooks in district schools began to be addressed.
- 1858 - SOUTH WESTPORT SCHOOL  
South Westport School, District No. 3, was built at Horseneck Road, southwest corner of four corners. It had taken from 1848 to 1858 before a vote was made to actually build the school. About 1865, it was moved across the road to the

southeast side of Horseneck Road. By the mid-1930's it was no longer used for a school but was used as a community center.



The building was moved or torn down around 1976. Two large pine trees mark the site of the school.



- 1864 - The Westport School Committee took over the Town's 20 schools and high school from the individual school districts.
- 1866 - The question of having a high school was discussed.
- 1868 - School Committee recommended the establishment of a high school at the Head of the East River and be maintained there unless a good place was found at the Point.

The town initiated a public high school in 1868 and it met half of the year at the Head and half at the Point in the beginning. Where it met at the Head before it took over the Academy space is not known.

- 1868 - 1869 - Town voted \$3,800 for public schools; the State school fund supplied \$178.78. Average pay of male teachers, \$46.35 a month; female teachers, \$21.00.

- 1869 - School property of Westport was appraised at \$6,497. The State passed a law abolishing districts.

1872 - UNION SCHOOL

A Union School, District No. 18, was authorized. It was shared by Dartmouth and Westport. This building is at 45 Beeden Road.



1874 - A school census was made compulsory.

1874, 1875, 1876 - New school buildings were erected.  
The Town was divided into three districts with a  
School Committeeman for each.

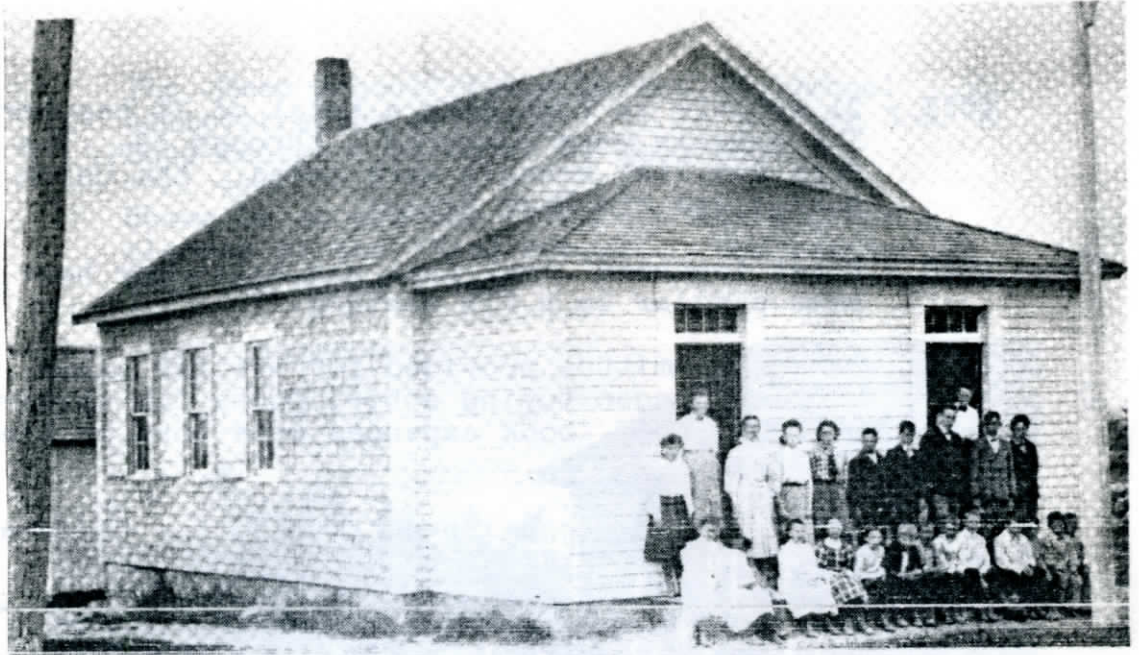
1875 - MACOMBER'S CORNER SCHOOL

A class at Macomber's Corner School, District  
No. 9, in 1875.

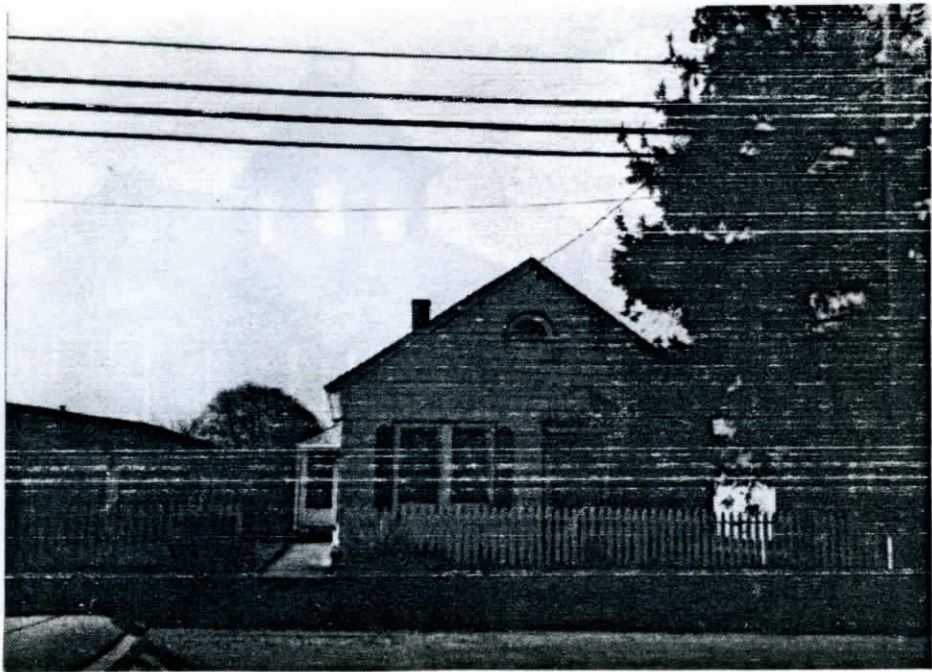


Macomber's Corner School was given its name  
presumably because Clarinda Macomber owned the  
farm below where Sodom Road connects with  
Adamsville Road. The teacher in the spring of  
1895 was Kate Chase (Tallman). She was a young  
student in the two-year town high school called  
to fill a vacancy.

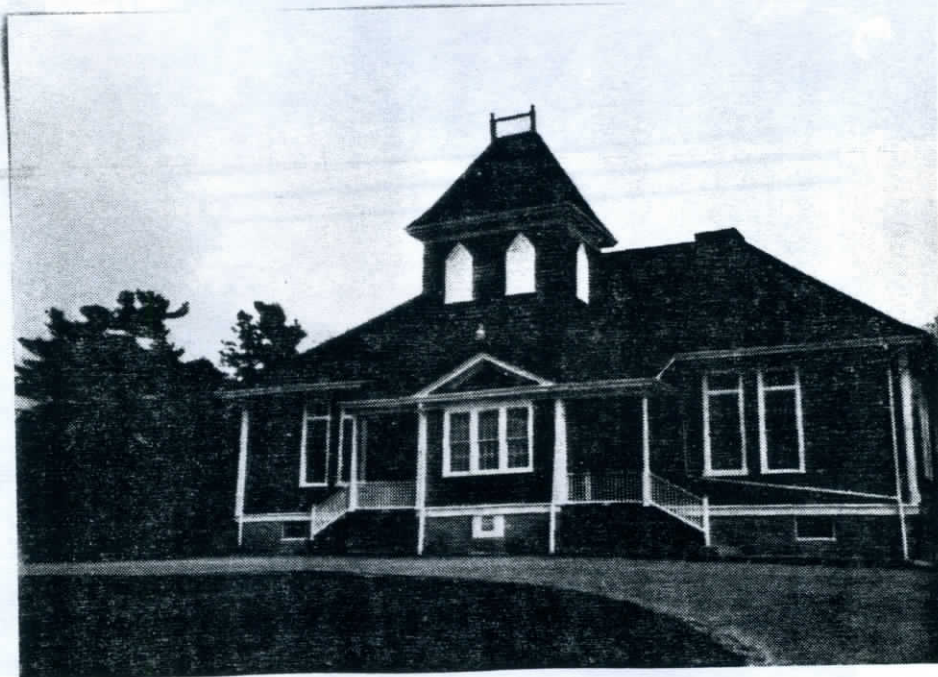
(The date of the photograph on the following  
page is unknown.)



The Macomber's Corner School was converted to a house at 218 Adamsville Road.



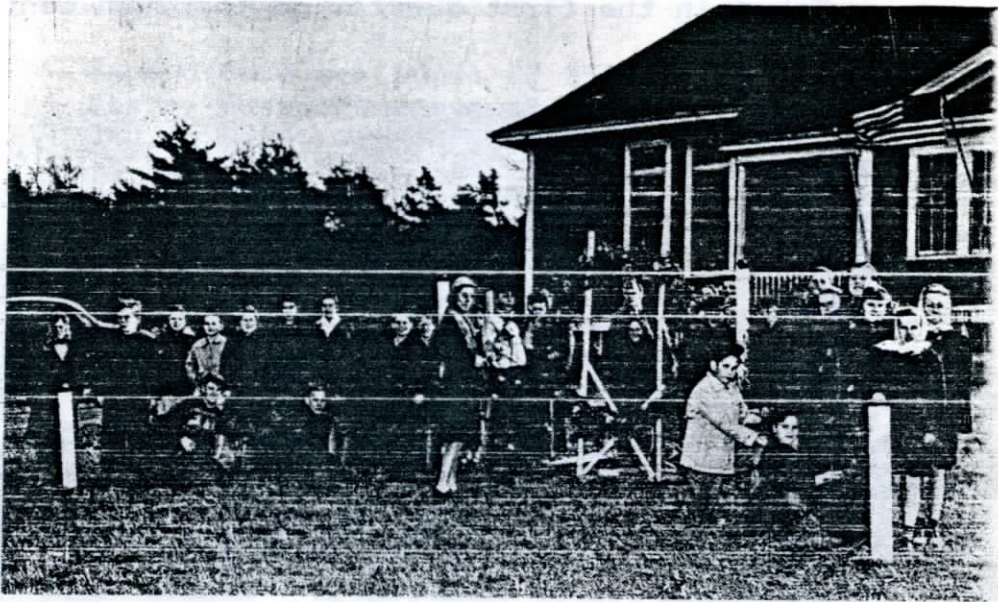
- 1877 - 21 schools in Town with a total of 21 teachers. The schools were numbered 1 through 19. The 20th and 21st schools were named: the Union School and the High School.
- 1883 - First teachers' institute was held--may have been similar to a PTA meeting.
- 1886 - School Committee provided for written exams. The Town began buying school books for children; prior to this, book expenses were born by the families.
- 1888 - Employment tickets issued to minors. Two-year course of study drawn up for High School.
- 1889 - Wall maps were provided in the schools. Janitors were hired.
- 1890 - School purchasing agent hired.
- 1890 - HIGH SCHOOL  
About this time, the High School at the Head was moved to the Point then to Central Village at the location of the Old Town Hall. The High School at the Head later became known as the "Head School".





The "Head School" later became the School Administration Building. It is now the John E. Boyd Center located at 75 Reed Road.

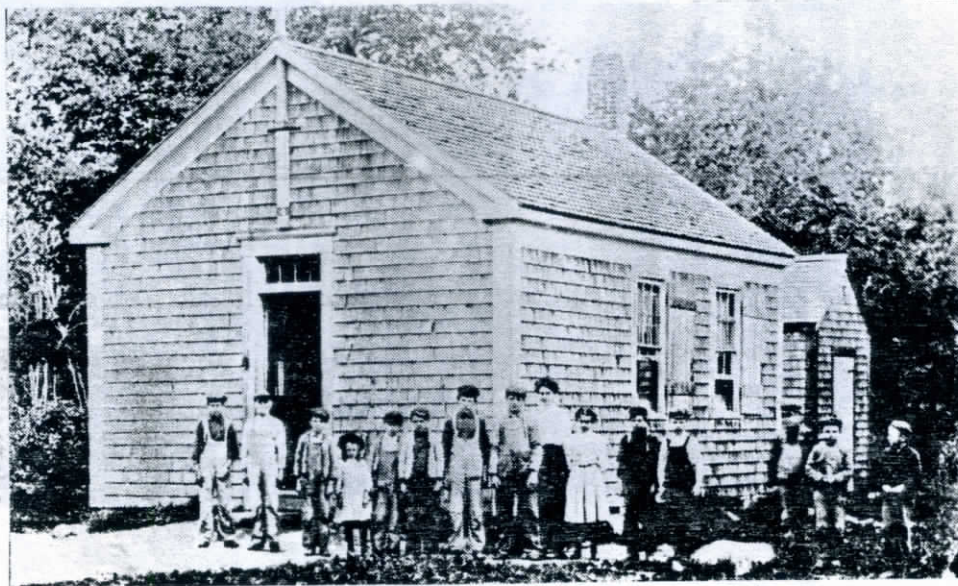
Shown below are the fifth and sixth grade classes at the "Head School". The teacher in 1947 was Hazel Tripp.



1891 - STATE SIDE SCHOOL

State Side School, District No. 12, was built on Sodom Road. It was a one-room schoolhouse north of Narrow Avenue and south of Charlotte White Road. The name of the school indicates its nearness to the Rhode Island line.

This picture shows pupils in grades 1 through 8. Taken in the first quarter of the 20th Century.



Pupils were, from left to right: Amory Pettey, Nelson Pettey, Carlton R. Macomber, Carrie R. Wood, Ralph R. Macomber, Carlton M. Wood, Rosene Pettey, George F. Wood, Anna Hull, teacher, May Pettey, Albert C. Wood, Norman W. Kirby, Ferdinand Lawton, George Manchester, Arthur Manchester.

- 1892 - First superintendent of schools, Seth A. Crocker. Mr. Crocker invented the "Crocker Number Wheel" that was patented and was used in many schools.
- 1893 - School system reorganization began and new text books were recommended.
- 1894 - Four students in the High School graduating class.
- 1895 - Road map of this time shows school locations. (See back of booklet.)

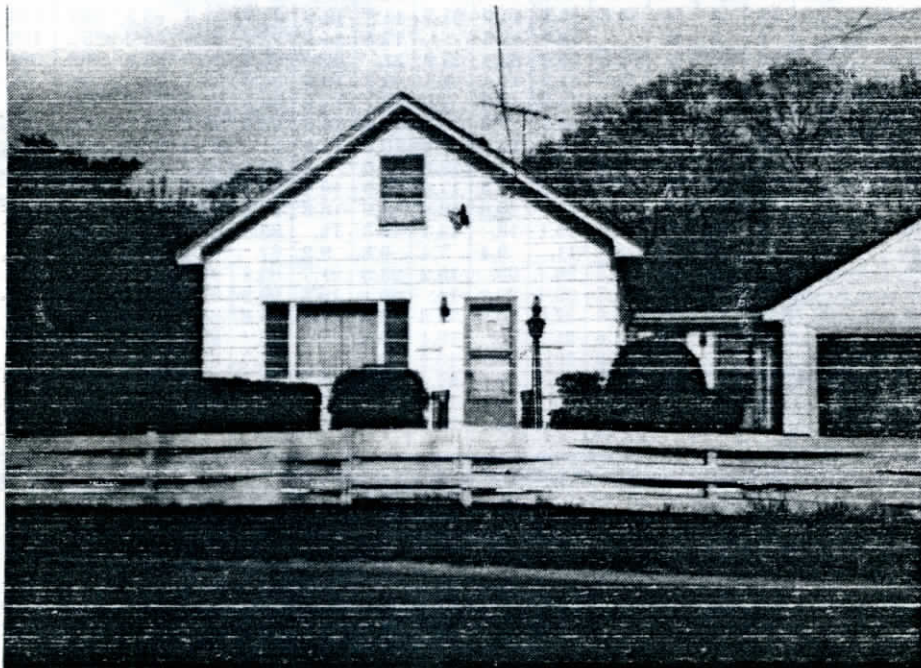
1897 - School Committee Report of this year emphasized overcrowded conditions, inadequate study material and general disrepair of buildings. Teaching standards were improving. Good teachers with credentials were sought after.

Absenteeism problem--of 353 cities and towns in state, Westport rated 333 in 1896, 192 in 1895, 244 in 1894.

Expenditure per pupil of 353 cities and towns in state, Westport rated 252 in 1896, 192 in 1895, 244 in 1894.

1897 - KIRBY CORNER SCHOOL

Kirby Corner School, District No. 11, was built. It was first converted to a store and later to a home at 380 Main Road.



1897 - 1898 - The School Committee Report of this year stated, "Teachers are more and more impressed that the teaching of "good behavior" and courtesy is an important element in the education of the young, and as they have by example and precept sought to guide the children aright in this respect, we find that rudeness of conduct and coarse and profane language are less frequently observed."

"Success of the teacher depends almost entirely upon his methods of discipline." "To direct and stimulate; not suppress and leaden."

1898 - State laws enacted by school system requiring vaccinations for contagious diseases. Child labor laws followed.

The following was taken from the School Committee Report of 1898.

### REPORT OF THE SCHOOLS FOR THE YEAR ENDING MARCH 18, 1898.

SCHOOLS.	WHOLE NO. ENROLLED.*			AVERAGE NO. BELONGING.			AVERAGE ATTENDANCE.			PER CENT. OF ATTENDANCE.			HALF DAYS' ABSENCE.			CASES OF TARDINESS.		
	Boys.	Girls.	Total.	Spring.	Fall.	Winter.	Spring.	Fall.	Winter.	Spring.	Fall.	Winter.	Spring.	Fall.	Winter.	Spring.	Fall.	Winter.
High School.....	13	13	26	23.6	17.3	14.9	21.7	15.8	13.9	91.9	91.3	93.2	230	148	140	37	24	36
1 Acoaxet.....	9	9	18	....	18.8	17.5	....	17.6	14.1	....	93.6	80.5	....	106	467	....	50	77
2 Horse Neck.....	16	25	41	33.6	36.9	35.4	27.9	31.	31.	83.3	84.	87.6	688	584	590	9	64	71
3 So. Westport.....	8	7	15	13.8	11.2	11.4	13.1	10.5	10.6	94.9	93.7	93.	94	76	106	3	2	0
4 East Side (River)...	7	9	16	11.2	14.2	14.6	9.9	13.7	13.9	88.3	96.4	95.2	156	58	98	40	21	72
5 Westport Pt., Prim.	12	5	17	12.8	16.1	17.9	11.9	14.9	16.6	92.9	92.5	92.7	104	118	178	11	9	6
6 Westport Pt., Gram.	10	10	20	15.7	12.4	14.5	14.3	10.9	12.8	91.	87.9	88.2	171	149	232	42	6	20
7 Hicks' Corner.....	8	12	20	16.7	12.9	10.7	13.8	9.6	7.8	82.6	74.4	72.8	340	332	388	123	63	68
9 Macomber Corner...	14	10	24	18.9	19.2	22.3	17.6	17.9	19.4	93.1	93.2	86.9	166	130	402	162	30	111
10 West Side.....	4	12	16	13.5	14.	13.8	12.8	12.9	13.3	94.8	92.1	96.3	82	105	80	1	2	4
11 Kirby Corner.....	9	12	21	15.4	15.1	13.	13.1	12.5	11.	85.	82.7	84.1	273	270	268	30	44	35
12 State Side.....	7	4	11	8.5	11.	9.4	7.4	9.8	8.2	87.	89.1	87.2	122	128	166	3	4	0
13 Brownell's Corner...	18	15	33	22.5	26.7	23.	19.2	23.5	21.7	85.2	88.	94.3	406	313	188	9	20	30
14 Head of W'port, Gram	9	9	18	15.5	23.4	20.3	14.	20.1	18.3	90.3	89.3	90.1	176	246	278	13	42	75
15 Sanford Road.....	19	18	37	33.8	32.6	30.2	28.6	28.3	23.9	84.6	86.8	75.8	626	424	874	198	190	70
16 Mouse Mill.....	10	14	24	21.6	21.1	20.	19.1	19.6	17.3	88.4	92.8	86.5	299	154	368	26	17	22
17 North Westport.....	6	23	29	17.2	22.1	21.1	15.1	19.	17.2	87.7	86.	81.5	249	306	518	58	19	51
19 Head of W'port, Prim	23	13	35	28.6	20.	19.8	27.4	18.5	16.	95.8	92.5	85.8	151	155	512	13	15	39
18 { Union Grammar...	10	5	15	13.	10.	9.2	12.3	9.5	7.9	94.7	95.	85.8	74	54	192	1	....	....
{ Union Primary.....	30	22	52	25.9	34.4	33.	22.3	29.9	25.2	86.1	86.9	76.3	392	449	1126	....	11	49

\*These figures represent the enrollment excluding duplicate enrollments.

Length of school year 36 weeks.

SALARIES OF TEACHERS.

	<i>Spring.</i>	<i>Fall.</i>	<i>Winter.</i>
<b>HEAD OF WESTPORT:</b>			
High School,			
H. A. Morse,	\$55 00		
Isaac H. Storer,		\$55 00	
Albion H. Ross,			\$50 00
Grammar School,			
Leroy F. Bliss.	40 00	40 00	40 00
Primary School,			
Sarah E. Lord,	32 00		
Addelaide L. Stevens,		32 00	32 00
<b>WESTPORT POINT:</b>			
Grammar School,			
Ida G. Goldthwait,	32 00		
Frances H. Handy,		32 00	32 00
Primary School,			
Hannah C. Gifford,	25 00	25 00	25 00
<b>ACOAXET SCHOOL:</b>			
Bertha Crain,	28 00		
Ida G. Goldthwait,		32 00	
Nellie B. Allen,			30 00
<b>HORSE NECK SCHOOL:</b>			
Mattie A. Crocker,	32 00		
Isabell S. McKenzie,		28 00	30 00
<b>SO. WESTPORT SCHOOL:</b>			
Nellie M. Pettey,	26 00	26 00	28 00
<b>EAST SIDE:</b>			
Mary C. Cory,	26 00	26 00	28 00
<b>HICK'S CORNER:</b>			
Nellie D. Smith,	26 00		
Alice M. Jones,		26 00	25 00
<b>MACOMBER'S CORNER:</b>			
Alice M. Jones,	28 00		
Mabel L. Tripp,		28 00	
Nellie D. Smith,			28 00
<b>WEST SIDE:</b>			
Edna M. Brophy.	28 00	28 00	28 00
<b>KIRBY'S CORNER:</b>			
Kate W. Chace,	28 00	28 00	
Kate G. Davis,			28 00
<b>STATE SIDE:</b>			
Grace A. Wilbur,	28 00	28 00	28 00
<b>BROWNELL'S CORNER:</b>			
Mabel L. Tripp,	\$28 00		
Nellie D. Smith,		\$28 00	
†Mabel L. Tripp, } Edward H. Macy, }			\$30 00
<b>SANFORD ROAD:</b>			
Isabel M. Horsford,	28 00	28 00	28 00
<b>MOUSE MILL:</b>			
Mary E. Young,	28 00	28 00	28 00
<b>NORTH WESTPORT:</b>			
Florice Taylor,	28 00	28 00	28 00
<b>UNION SCHOOL:</b>			
Grammar,			
Louise E. Tupper,	36 00	36 00	36 00
Primary,			
Frances H. Handy,	32 00		
Marion G. Smith,		32 00	32 00
Eliza Kelley, (Asst.)			16 00

†Taught two weeks at \$28.00

Names of pupils not absent one session for one term.

Artingstall, Ruth A.*	Kirby, Willie L.
Baker, Grace E.	Lawton Lida, A*
Baker, Chester J.	Macomber, Mabel E.
Borden, Howard S.*	Macomber, Marianna
Bowman, Lester A.	Mauley, Charles
Bassett, Sylvester	Manchester, Harry*
Brown, Susie	Norris, Caroline*
Brightman, Fulton*	Paquin, Henry*
Brightman, Oma*	Sherman, Edward A.
Brightman, Alice M.	Sherman, Andrew
Brownell, Helen L.	Shorrock, Luella*
Chace, Louisa M.*	Sisson, Leroy*
Chace, George E.	Sisson, George G.
Cornell, Albert	Tripp, Granville A.*
Chabot, Rosalie	Tripp, Edith A.
Chabot, Lora	Tripp, Ralph
Couthere, Joe*	Tripp, Marie*
Cummings, Lydia	Tripp, Laura
Cummings, Michael	Tripp, Helen*
Freeman, Bernard*	Tripp, Louis H.*
Gifford, Lizzie H.	Townley, Charles*
Gagnon, Rosanna*	Tupper, Catherine*
Johnson, Hattie	Wicks, Helen M.
Kirby, Addie B.	Wing, Alice*
Kirby, Walter S.*	Whalon, Mary

ROLL OF HONOR.

Following are the names of pupils not absent a single session for the entire school year.

Fowler, Minnie C.*	Sisson, Fannie***
Lake, Willie***	Sanford, Herbert***
Lake, Maude P.	Tripp, Herbert M.*
Lake, Blanche***	White, Mollie***
Palmer, Fred***	

Names of pupils not absent one session for two terms.

Blossom, Susie M.	Lawton, Carrie R.**
Blossom, Clara L.	Macomber, Sophia E.**
Bowman, Elmer C.	Sanford, Edson**
Brayton, Henry B.	Sherman, George**
Briggs, Lester**	Sisson, Lizzie**
Brightman, Oliver	Sisson, Nathaniel L.*
Brightman, Diana**	Sisson, Emily F.**
Chase, Clara U.*	White, Leland**
Gifford, Myra D.*	White, William C.*
Gifford, Chester W.*	
Gifford, Clifton A.*	
Kirby, Della E.**	

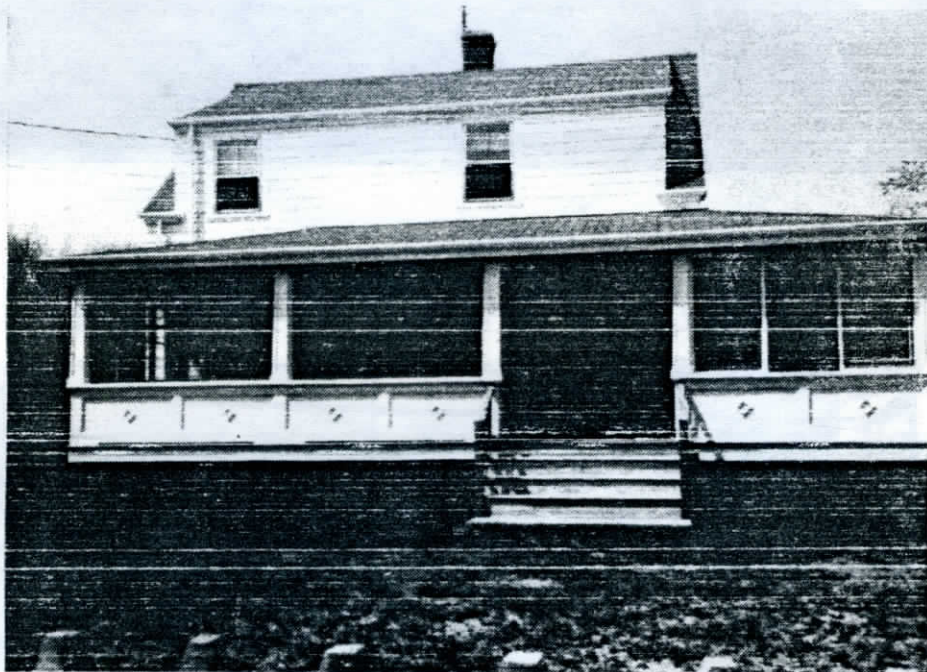
\*The star indicates the number of terms that the pupil was not tardy or dismissed.

1900 - Many of the schools built prior to 1900 were given names. The school day was from 9 a.m. to 12 noon and from 1 p.m. to 3:30 p.m.

The following are photographs of buildings that were former schools. Some buildings still contain the original schoolhouse or a part thereof. No available information was found as to the actual date of construction of these schools. Other schools not shown here, but are listed on the maps of 1871 and 1895, have either been moved or destroyed.

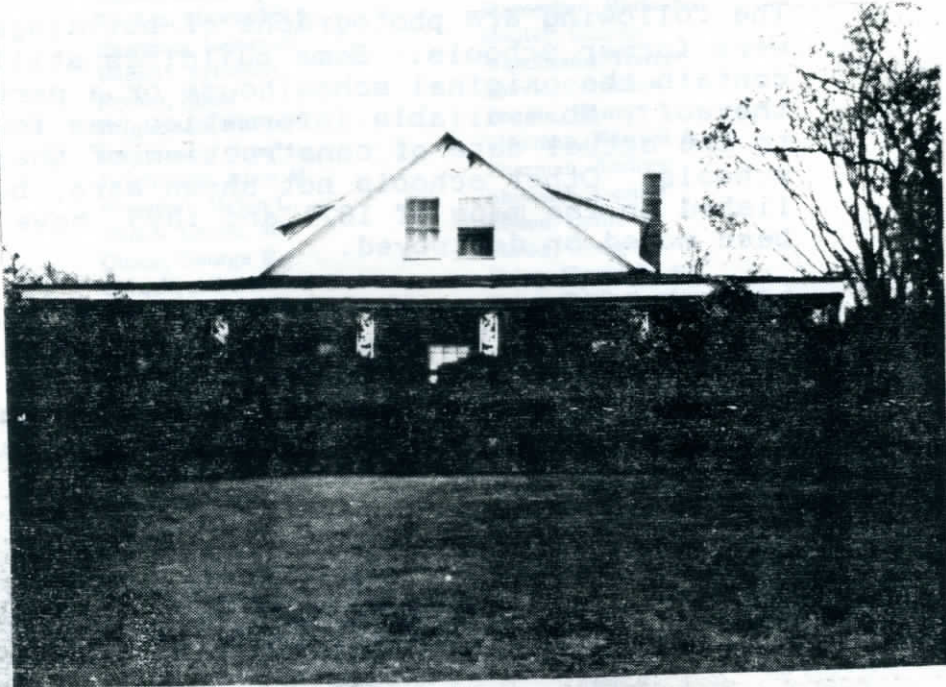
ACOAXET SCHOOL

Acoaxet School, District No. 1, was built on Cross Road in the Harbor area. After its closing, it was purchased by Everett Coggeshall to be converted to a home at 129 Cross Road.



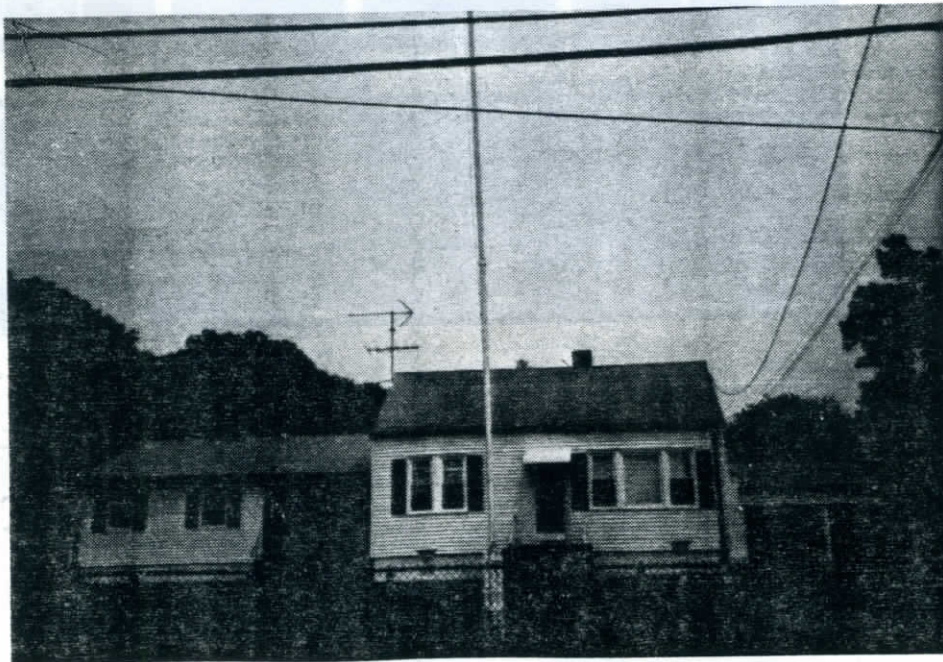
EAST SIDE SCHOOL

East Side School, District No. 4, was converted to a home at 308 Pine Hill Road.



MOUSE MILL SCHOOL

Mouse Mill School, District No. 16, was converted to a home at 258 Gifford Road.





SANFORD ROAD SCHOOL

Sanford Road School, District No. 15, is shown here before it was raised to add a cellar. Alice Sanford is shown here about 1908.

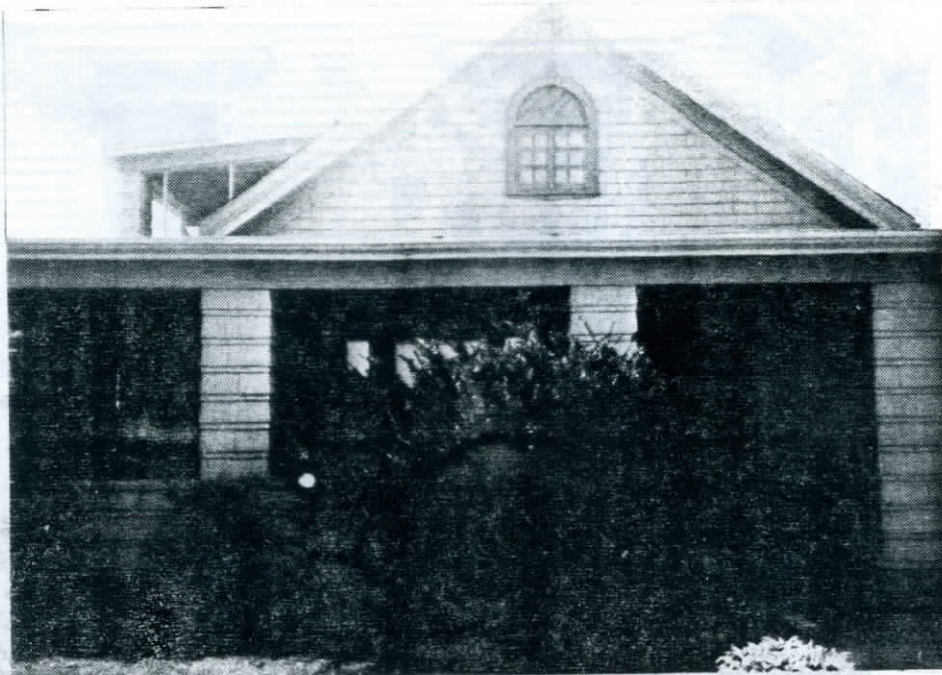


Today it is the American Legion Hall, James Morris Post 145, located at 489 Sanford Road.



HICKS' CORNER SCHOOL

Hicks' Corner School, District #7, was converted to a home located at 1435 Main Road.



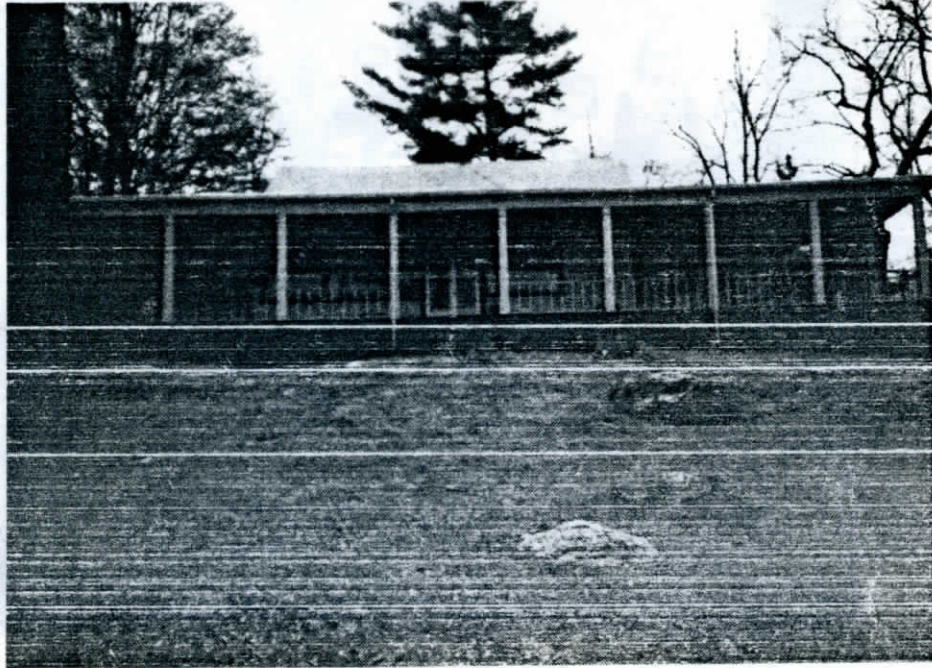
WEST SIDE SCHOOL

West Side School, District No. 10, was converted to a home located at 661 Drift Road.

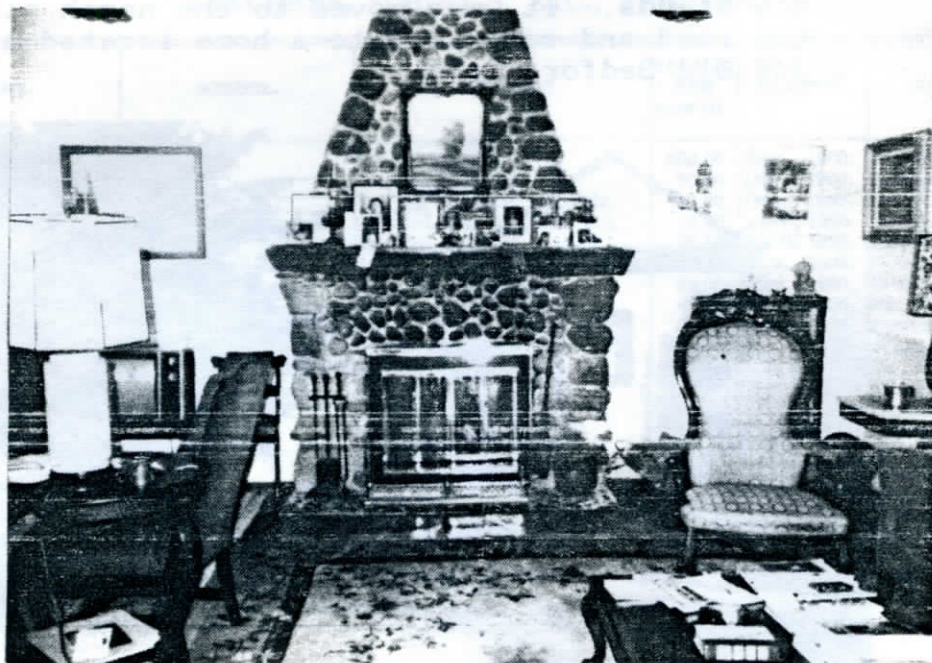


RIVERSIDE SCHOOL

Riverside School, District No. 8, was originally at the top of the hill on the west side of Drift Road. It was later moved to the east side and then moved to the riverfront where it was converted to a home at 1280 Drift Road.

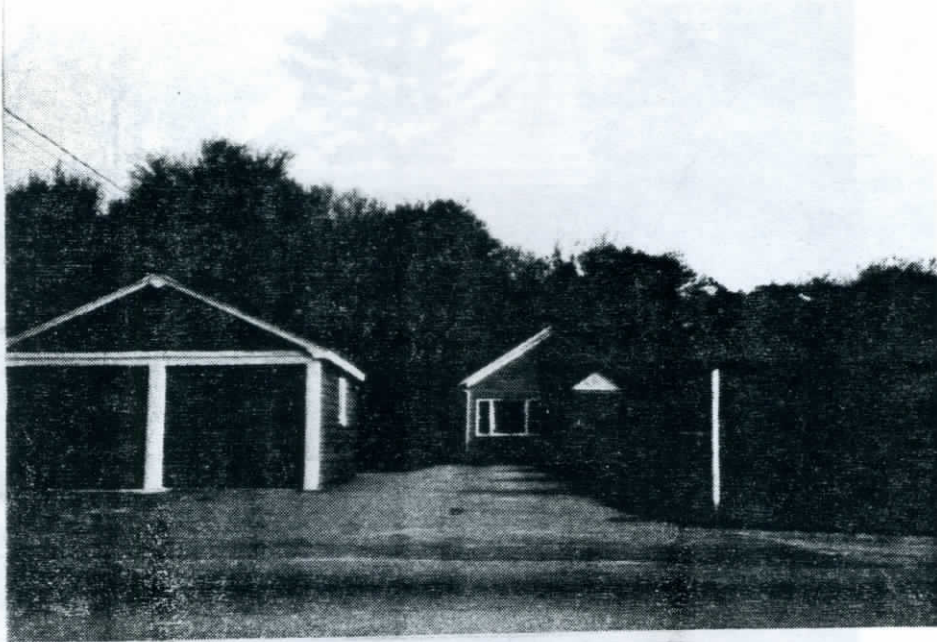


This appears to be the original fireplace in the schoolhouse.



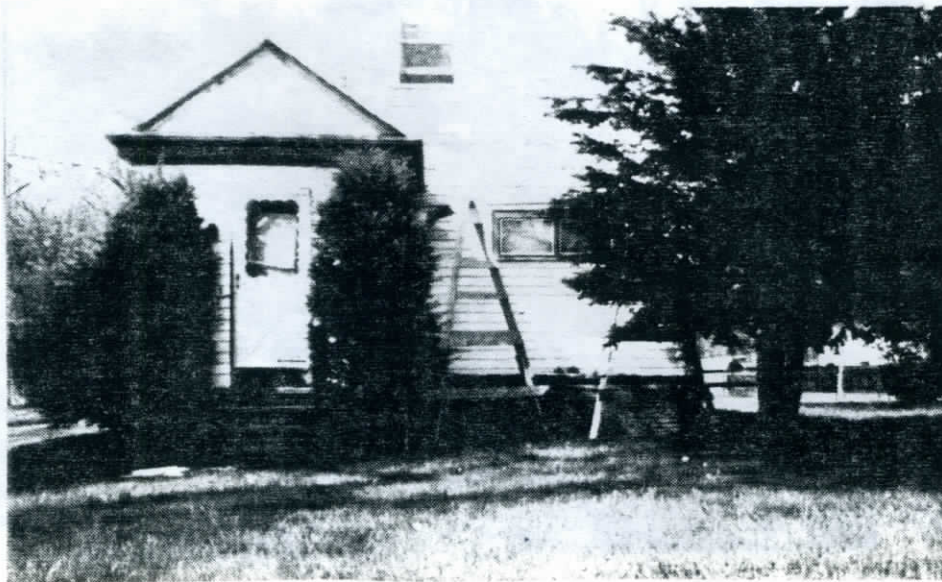
BROWNELL'S CORNER SCHOOL

Brownell's Corner School, District No. 13, was the first school by this name. It was converted to a home located at 508 American Legion Highway.



NORTH WESTPORT SCHOOL

North Westport School, District No. 17, was the first school by this name. It was on the south side of Old Bedford Road where the Grange Hall now stands. It was moved to the north side of the road and converted to a home located at 348 Old Bedford Road.



Shown here is a pre-1900 class at the North Westport School. Names of the students and teacher are unknown.



1901 - The School Committee Report listed the names of the schools and the teachers who taught.

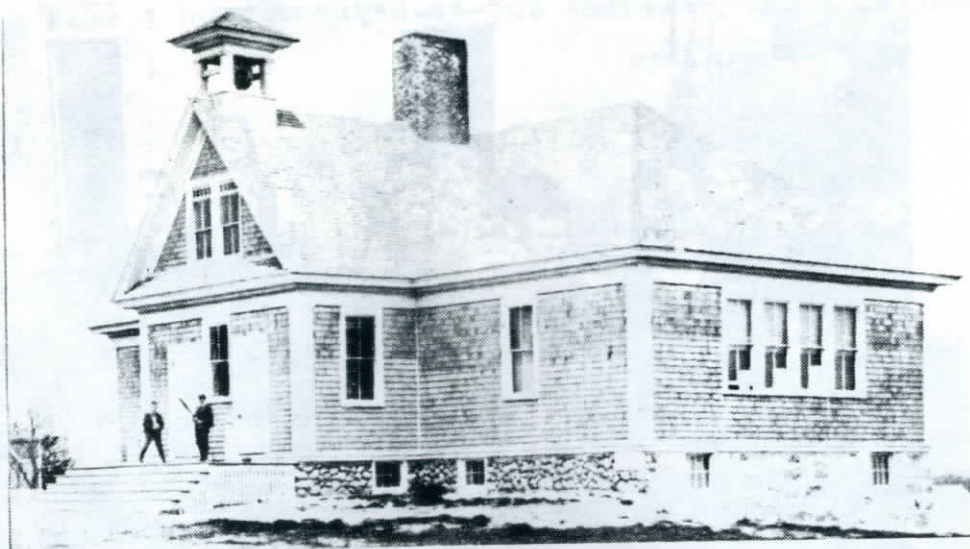
TEACHERS, SCHOOLS, ETC., FEB. 1901.

NAME.	SCHOOL.	GRADE.*	SALARY PER MONTH.	ELECTED.	ADDRESS.
Alpheus W. Rich,	High.	9th, 10th, 11th	\$60.00	Sept., 1900.	Westport.
Daniel S. Coombs,	Acoaxet.	1st, 3rd, 4th, 5th, 9th	30.00	Dec., 1900.	Adamsville, R. I.
Jennie L. F. Cowen,	Horse Neck.	1st, 2d, 3rd, 4th, 7th, 8th	30.00	Dec., 1899.	So. Westport.
Chloe E. Macomber,	So. Westport.	1st, 3rd, 4th, 5th, 6th, 9th	28.00	April, 1900.	So. Westport.
Leora P. Brightman,	East Side.	1st, 3rd, 6th, 8th	28.00	April, 1899.	Central Village.
Emma R. Lawrence,	Point Primary.	1st to 3rd	30.00	Sept., 1900.	Westport Point.
Mary M. Simpson,	Point Grammar.	5th, 7th, 9th	32.00	Sept., 1900.	Westport Point.
Winnie L. Blanchard,	Hix Corner.	1st, 2d, 3rd, 5th	28.00	April, 1900.	So. Westport.
Elizabeth M. Boan,	Macomber Corner.	1st, 2d, 3rd, 5th, 6th, 8th	30.00	April, 1898.	Central Village..
Edna M. Brophy,	West Side.	1st, 2d, 3rd, 4th, 6th	30.00	Sept., 1893.	Westport.
M. Ethel King,	Kirbys Corner.	3rd, 5th, 7th, 8th	28.00	Sept., 1898.	No. Westport.
Ruth A. Artingstall,	State Side.	1st, 2d, 4th, 7th	28.00	Sept., 1898.	Central Village.
Alice A. Macomber,	Brownell Corner.	1st, 2d, 3rd, 4th, 5th, 7th	28.00	Sept., 1898.	Central Village.
Percy W. Brackett,	Head Grammar.	4th, 5th, 6th, 7th, 8th	40.00	May, 1899.	Westport.
Nellie M. Pettey,	Sanford Road.	1st, 2d, 3rd, 4th, 6th	30.00	Dec., 1890.	No. Westport.
Susan M. Bradley,	Mouse Mill.	1st, 2d, 3rd, 4th, 5th, 7th, 8th	28.00	Nov., 1900.	No. Westport.
Mary E. Blossom,	No. Westport.	1st, 2d, 4th, 5th, 6th	28.00	Sept., 1899.	No. Westport.
Lottie J. Guyer,	Head Primary.	1st to 3rd	30.00	Sept., 1899.	Westport.
Frances H. Handy,	Union Grammar.	3rd, 5th, 6th	34.00		Westport Factory.
Julia M. Taylor,	Union Primary.	1st to 3rd	34.00	Nov., 1900.	No. Dartmouth.
Edith H. Gifford,	Asst. Union Primary.		14.00	Dec., 1900.	New Bedford.

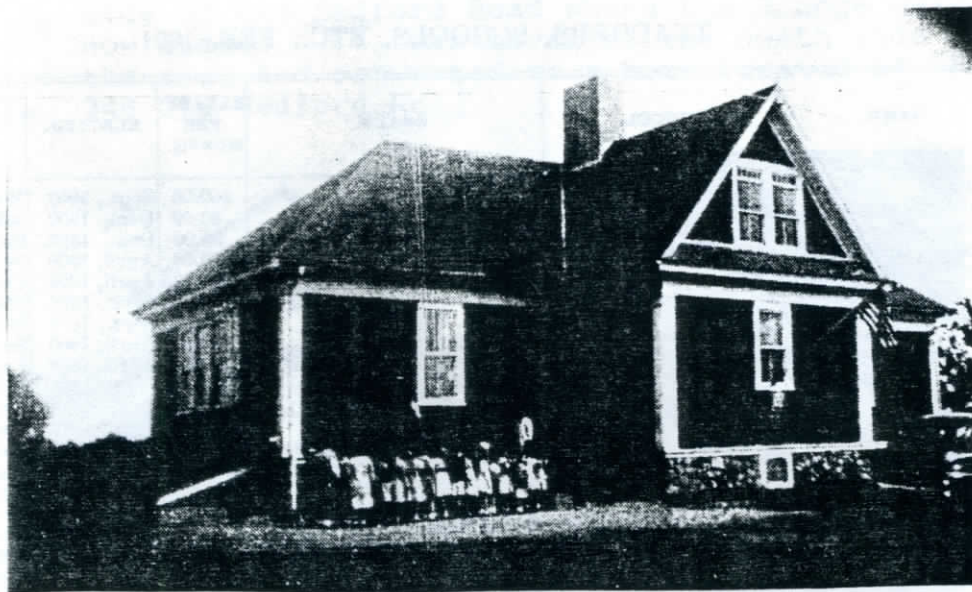
\* In all the schools grades are grouped for work in *four* or more studies, thus it will be understood that the grades here do not express the number of groups or classes in the schools.

1904 - WESTPORT POINT SCHOOL

The "new" Westport Point School, District No. 6, built in 1904, was used as a high school.



Taken in the 1940's, this photograph shows the change in the front entrance to the school.



Today the Westport Point School is a home located at 1886 Main Road.



1908 - About this time, "Dartmouth felt that it had become large enough for a superintendent of its own and the union was dissolved. Westport was then for a period of a few years in a union with Freetown and either Cuttyhunk or Gosnold."

1910 - By this time, all teachers were female. They taught school and acted as janitors.

1910 - NORTH WESTPORT SCHOOL

The "new" North Westport School was built on Old Bedford Road. It was torn down when Route 195 was built in 1961.



Leanna Tripp was in this class at the North Westport School.





1912 - First janitor hired at the Union School.

1915 - The State Board of Education inspected the eight schools in Town: North Westport, Sanford Road, Brownell's Corner, Hicks' Corner, Westport Point, Horseneck, East Side and High.

There were 20 schools in Town at this time.

**Number of Pupils in the Total Membership of the Different Schools, Classified by Grades. Fall Term, 1915.**

SCHOOLS.	One	Two	Three	Four	Five	Six	Seven	Eight	Nine	Ten	Totals
High,								15	10	4	29
Head Grammar,				13	8	12	7				40
Head Primary,	10	9	11	13							43
Point Grammar,					3	4	2	9	5		23
Point Primary,	3	3	5	3							14
Union Grammar			15	9	5	10	2	10			51
Union Primary,	29	18									47
North Grammar,					7	9	4	4			24
North Primary,	12	12	9	4							37
Mouse Mill,	5	6	4								15
Brownell's Corner,	4	6	4	8	3						25
East Side,	4	3	2	2	3	5					19
West Side,	2	2	2	4	3	2					15
State Side,		6	5	2	3	2					18
Sanford Road,	4	3	7	6	3						23
Macomber's Corner,	2	3	4	4	2	7					22
Acoaxet,	5	1		2	5		5				18
Hick's Corner,		4	2	4		2	3				15
South,	1	5	6		2	1	3				18
Horseneck,	5	4		10	5	4	4	4			36
<b>Totals,</b>	<b>86</b>	<b>85</b>	<b>76</b>	<b>84</b>	<b>52</b>	<b>58</b>	<b>30</b>	<b>42</b>	<b>15</b>	<b>4</b>	<b>532</b>

1916 - Plans were made to build a new high school at Central Village.

1918 - Standardized curriculum in elementary schools is initiated.

1918 - HIGH SCHOOL

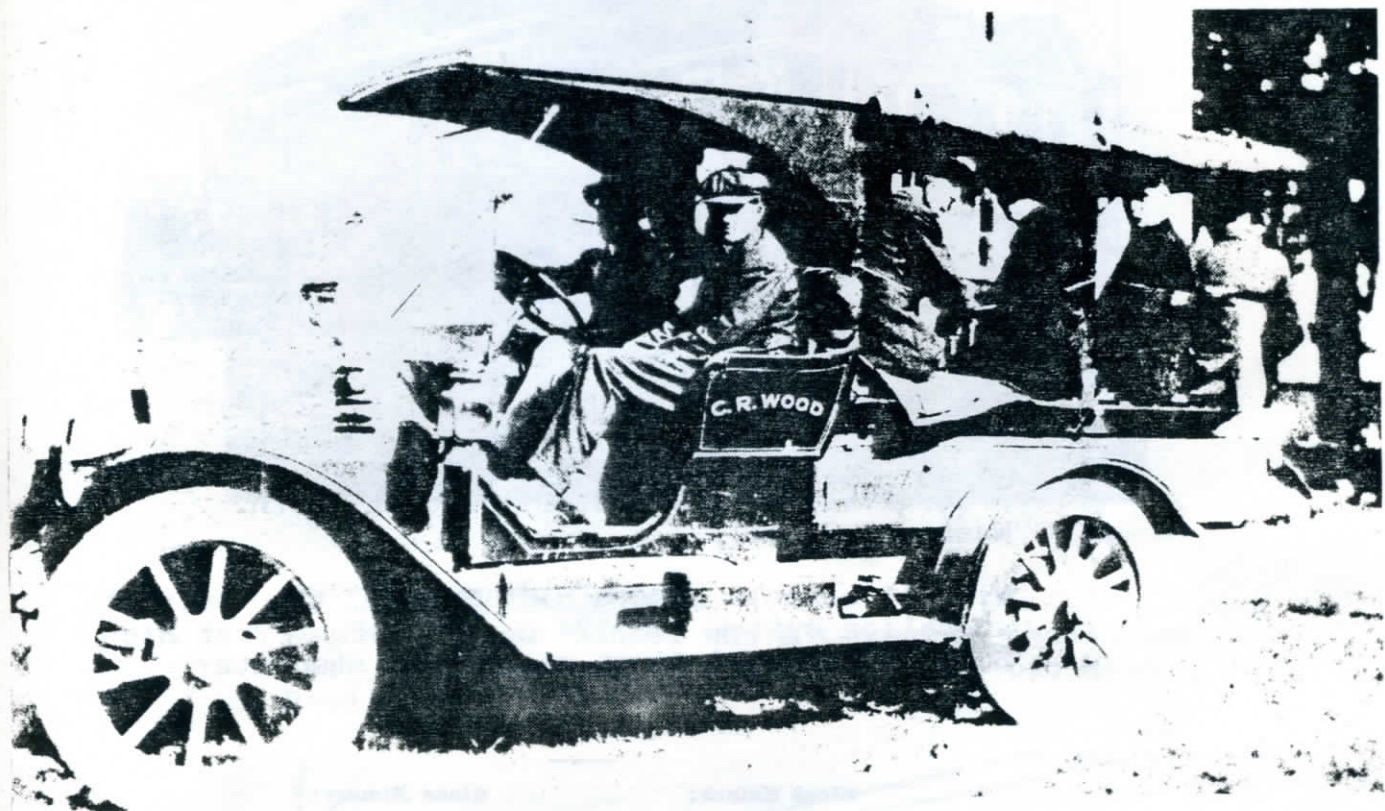
The "new" High School was completed in Central Village. Thirty to forty pupils were enrolled.

The original school consisted of the two front sections. Because of overcrowding, an addition was built in 1934 with a second floor and a combination auditorium/gymnasium.



1919 - South Westport School has 15 pupils in its elementary through grammar classes.

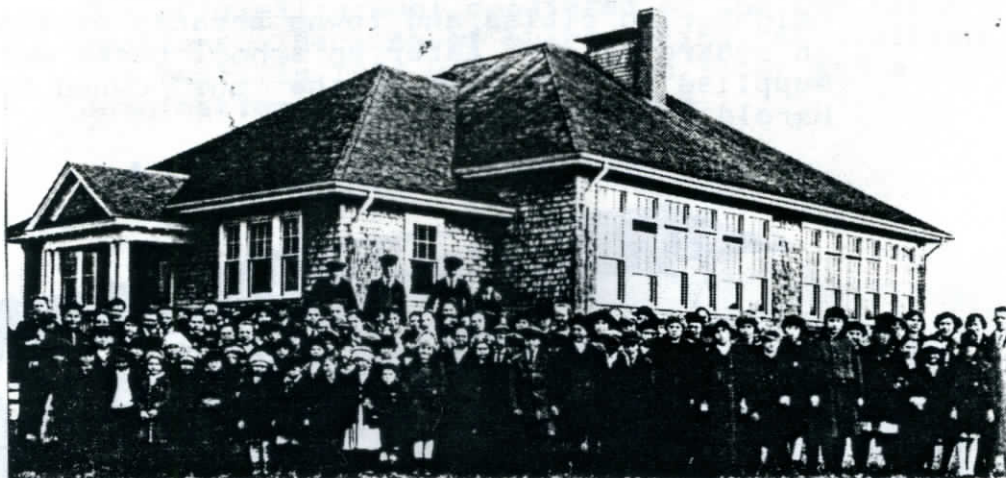
1919 - State law requiring towns to provide transportation for students living over two miles from school. The Town provided trucks, often times overcrowded. Westport's transportation costs were higher than neighboring cities and towns because of its size in square miles. Later on school buses were supplied. Shown here is the "bus" owned by Harold S. Wood's father.



1920 - First school nurse appointed to work with a school physician.

1921 - Transition from 2-year to 4-year high school curriculum.

1922 - First junior high school started at Central Village. Domestic science courses were started. Four-year course of study for high school began. Grades 1 through 12 attended the High School.



1923 - Two nurses were now employed in the school system.

A dental clinic was established at North Westport School.

With 11 schools plus a High School, the Westport education system had 774 pupils. Four-year High School graduated first class -- 8 students:

**Class Motto:**

*The will to do; the soul to dare*

**Class Colors:**

Purple and Gold

**Class Flower:**

Iris

**Class Roll:**

F. ESTHER ANDREWS  
 JOHN BOSTROM  
 H. PHYLIS CHACE  
 MARY A. CUNNINGHAM  
 MARY E. KRATZSCH  
 LUCY M. NICKERSON  
 HAZEL A. TRIPP  
 BERTRAND T. WOOD

John Remick, Principal

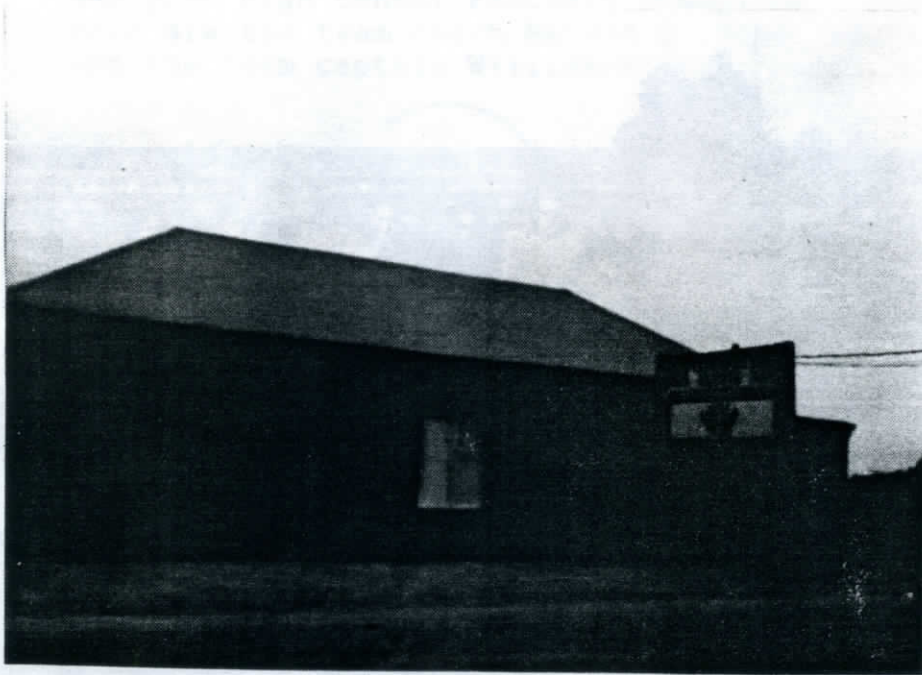
Edward L. Hill, Superintendent

Doris Wilcox graduated in 1921 from a two-year course. Since she was the only graduate, no ceremony was held. She participated in the 1923 graduation program.

1923 - Appropriations were made to build three new schools: Brownell's Corner, Booth's Corner and Greenwood Park.

BROWNELL'S CORNER SCHOOL

The "new" Brownell's Corner School is now a business on Sanford Road.



BOOTH'S CORNER SCHOOL

Booth's Corner School was a two-room schoolhouse that was converted to a duplex at 646-648 Main Road.



GREENWOOD PARK SCHOOL

Greenwood Park School located at 25 Arlington Avenue was converted to apartments.



1924 - A second junior high school was established at the Union School.

There were 12 schools in Town at this time teaching basic subjects, handwork, household arts, manual training, agriculture and academic courses. Millinery and home nursing were added to the High School curriculum.

1925 - PTA first organized.

Westport High School has largest enrollment in history.

1927 - Physical education was started as a daily instruction -- 15 minutes a day.

Down to 11 schools. Some were in different locations. They were: High, Union, Greenwood Park, Head, Point, Booth's Corner, Brownell's Corner, Acoaxet, South Westport, North Westport and Sanford Road.

1934 - High School addition was built with a second floor and a combination auditorium/gymnasium.

1937 - South Westport School was closed.

1939 - A guidance program was established at Westport High School by Superintendent Milton E. Earle.

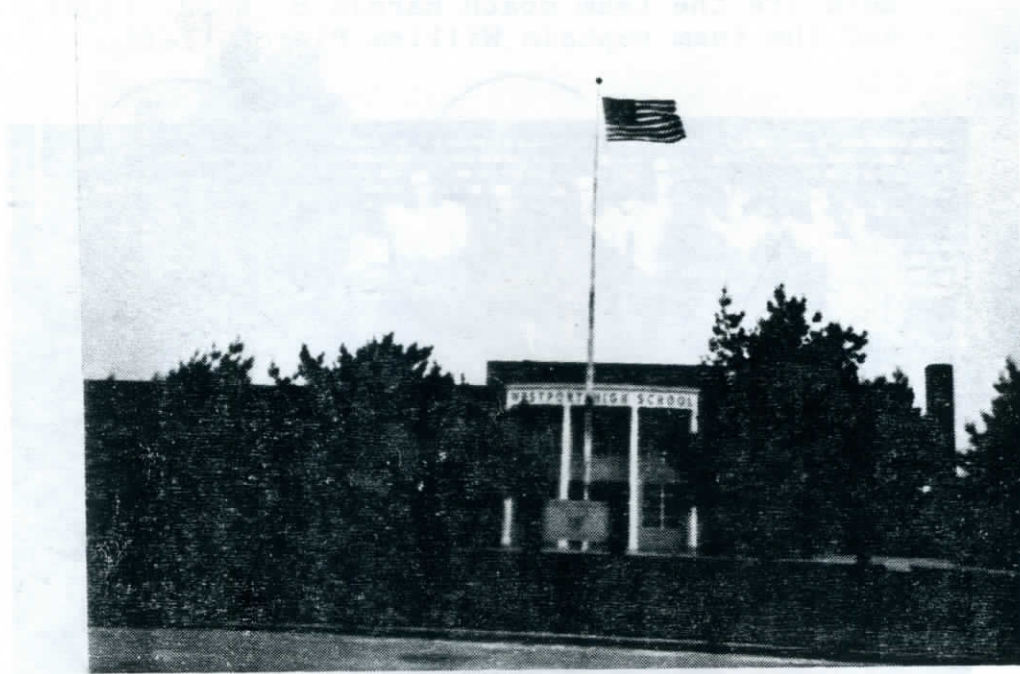
Westport High School Football Champions. Shown here are the team coach Harold S. Wood, right, and the team captain William Pierce, left.



- 1940 - By this time, there was 1 High School and 8 elementary schools: Factory (Union), Booth's Corner, Greenwood Park, Head, Brownell's Corner, North Westport, Beulah and Point.
- 1951 - The High School became the Milton E. Earle middle school.
- 1952 - There was 1 High School at this time and 5 elementary schools: Earle, Head, Factory, Greenwood Park and North Westport.

1952 - WESTPORT HIGH SCHOOL

The "new" Westport High School was opened and Harold S. Wood was principal. Edna Leuvelink was the art teacher.



1953 - Westport Point School had re-opened due to a population increase prior to this time, and was closed again when the new High School was built in 1952.

Plans were beginning for a junior high school on Gifford Road.

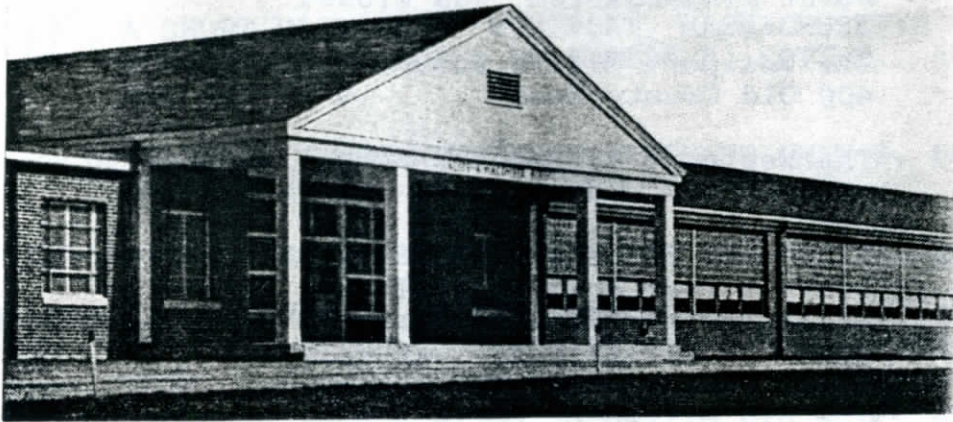
1955 - The Gifford Road school was built and named the Alice A. Macomber School.

1956 - The Alice A. Macomber School, a junior high school at this time, opened.

Westport High School added on 5 more classrooms and a bigger shop room.

1957 - The Alice A. Macomber School held dedication ceremonies.





# **ALICE A. MACOMBER SCHOOL**

## ***DEDICATION***

**Westport, Massachusetts**

*Sunday, May 12, 1957*

*Auditorium*

*3:00 P.M.*

- 1961 - North Westport School was torn down for the construction of Route 195.
- 1970 - About this time, the last satellite school, the Point Kindergarten, was closed.
- 1970 - The Westport Middle School was opened at 400 Old County Road.
- 1977 - The Westport Elementary School was opened at 380 Old County Road.
- 1982 - Milton E. Earle elementary school was closed, leaving four schools in Town: Alice A. Macomber, Westport Elementary, Westport Middle and Westport High.
- 1986 - The old Milton E. Earle School became the School Administration Building.
- 1987 - The basement of the old Milton E. Earle School became the Town Hall Annex.



<<>>

## BIBLIOGRAPHY

1. REPRINT OF STANDARD-TIMES NEWSPAPER ARTICLE OF MAY 5, 1929 DONE BY GLADYS B. KIRBY--OBTAINED FROM WESTPORT LIBRARY.
2. A SHORT HISTORY OF WESTPORT, MASSACHUSETTS (TO 1900), PREPARED BY JUSTIN F. LITTLE, MAY 12, 1970.
3. STANDARD-TIMES NEWSPAPER ARTICLES--MAY 2, 1976 AND AUGUST 26, 1975 (BELL SCHOOLHOUSE).
4. VARIOUS MATERIAL FOUND AT THE WESTPORT LIBRARY.
5. PHOTOGRAPHS COLLECTED FROM NEWSPAPERS ARTICLES FROM THE STANDARD-TIMES AND FROM MANY ELDERS IN TOWN.
6. MAPS REPRODUCED FROM COPIES DONATED BY VARIOUS TOWN RESIDENTS.
7. MANY FACTS OBTAINED FROM THE WESTPORT SCHOOL COMMITTEE REPORTS DATING FROM 1843 THROUGH 1953 -- COPIES FOUND AT THE WESTPORT LIBRARY AND THE SCHOOL ADMINISTRATION OFFICE.
8. PHOTOS AND INFORMATION OBTAINED FROM "THE HEAD OF WESTPORT: A BRIEF HISTORY AND A WALKING TOUR GUIDE TO ITS HISTORIC HOUSES" PUBLISHED BY THE WESTPORT HISTORICAL COMMISSION FOR THE BICENTENNIAL YEAR, 1987-1988.
9. INFORMATION OBTAINED FROM "THE VILLAGE OF WESTPORT POINT, MASSACHUSETTS" PUBLISHED IN 1976 BY KATHARINE STANLEY HALL AND MARY HANNAH SOWLE.
10. INFORMATION ON PAUL CUFFEE'S SCHOOL FROM BOOK: "THE BLACK YANKEE", BY GEORGE SALVADOR.

<<>>





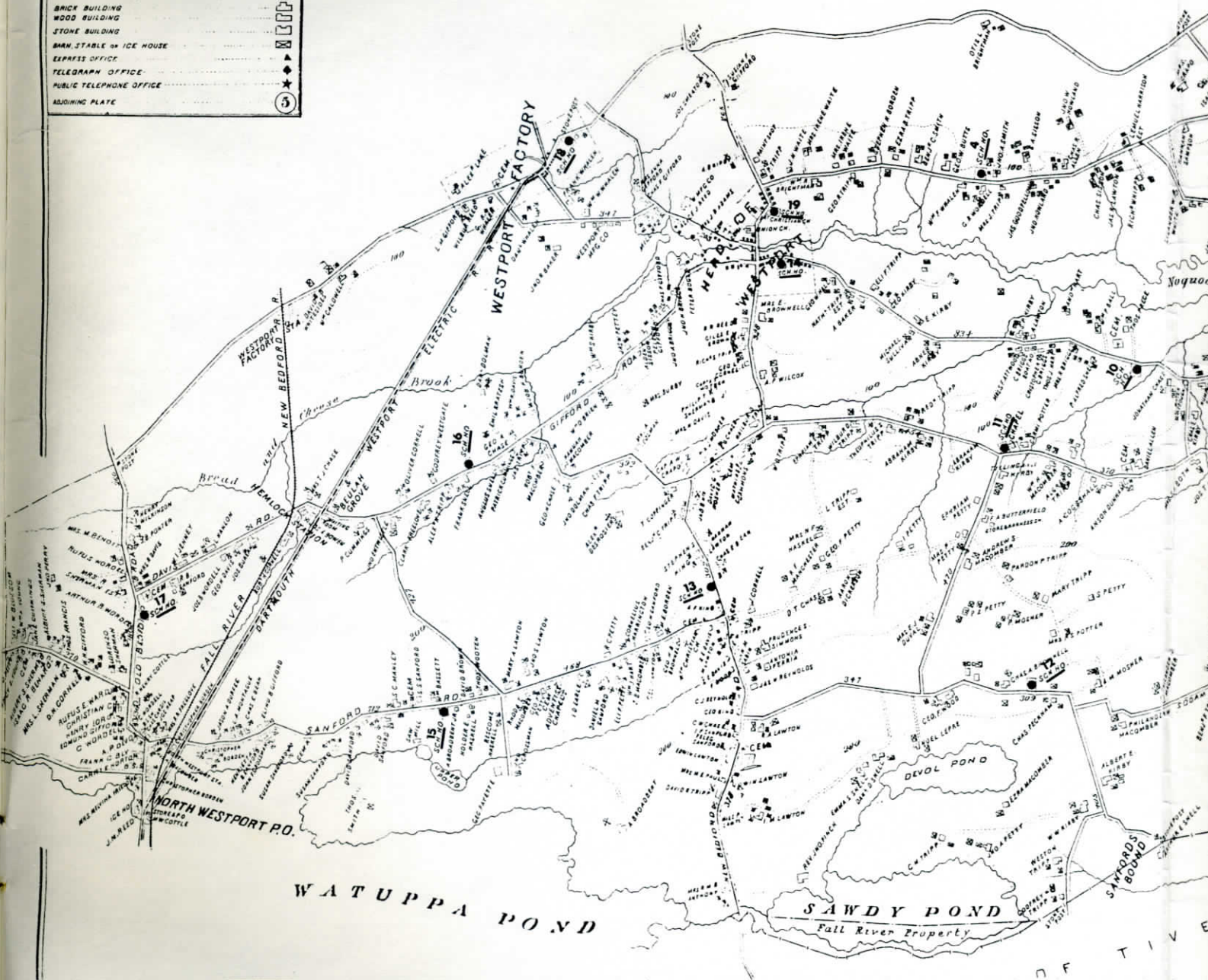
REFERENCES

- COUNTY & STATE BOUNDARY LINE
- TOWN BOUNDARY LINE
- TOWN BOUNDARY MONUMENT
- CONTOUR LINE
- HIGHEST ELEVATION IN TOWN
- PUBLIC ROAD OR STREET
- PRIVATE ROAD
- IRON BRIDGE
- STREAMS
- WATER TROUGH
- STAGE LINE
- RAILROAD
- RAILROAD CROSSING AT GRADE
- RAILROAD GOING UNDER PUBLIC ROAD
- RAILROAD GOING OVER PUBLIC ROAD
- ELECTRIC CAR LINE
- QUARRY
- CHURCH
- COLLEGE OR SCHOOL
- CENETERY
- BRICK BUILDING
- WOOD BUILDING
- STONE BUILDING
- BARN, STABLE OR ICE HOUSE
- EXPRESS OFFICE
- TELEGRAPH OFFICE
- PUBLIC TELEPHONE OFFICE
- RAISING PLATE

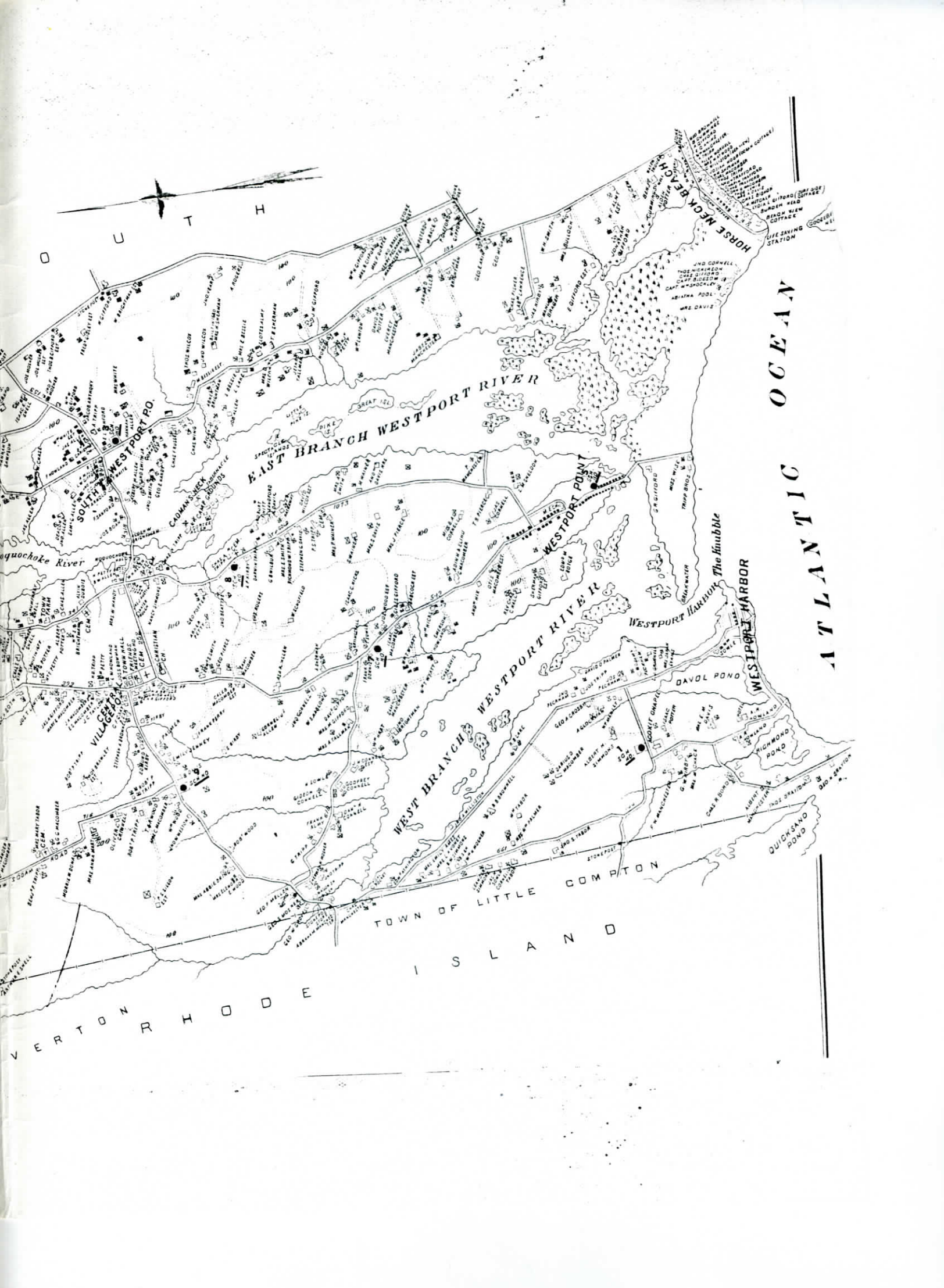
# TOWN OF WESTPORT



D A R T M



D F T I V E



O U T H

OCEAN  
ATLANTIC

EAST BRANCH WESTPORT RIVER

WEST BRANCH WESTPORT RIVER

TOWN OF LITTLE COMPTON

VERTON RHODE ISLAND

quochoke River

VILAGE OF WESTPORT

SOUTH WESTPORT RD.

Westport Harbor  
*The knubble*

WESTPORT HARBOR

DAVUL POND

RICHMOND POND

QUICKSAND POND

HORSE NECK BEACH

LIFE SAVING STATION

JNO CORWELL  
THOMAS NICKERSON  
GEO GIFFORD  
CAPT W SHOCKLEY  
ADATHA POOL  
MRS DAVID

WESTPORT POINT

TRAMP BROOK

SWANWATER

DAVID PALMER

AGNES WALKER

ALBERT SIMON

WILLIAM WOOD

WILLIAM WOOD

WILLIAM WOOD

WILLIAM WOOD

WILLIAM WOOD

WILLIAM WOOD

WILLIAM WOOD

WILLIAM WOOD

WILLIAM WOOD

WILLIAM WOOD

WILLIAM WOOD

WILLIAM WOOD

WILLIAM WOOD

WILLIAM WOOD

WILLIAM WOOD